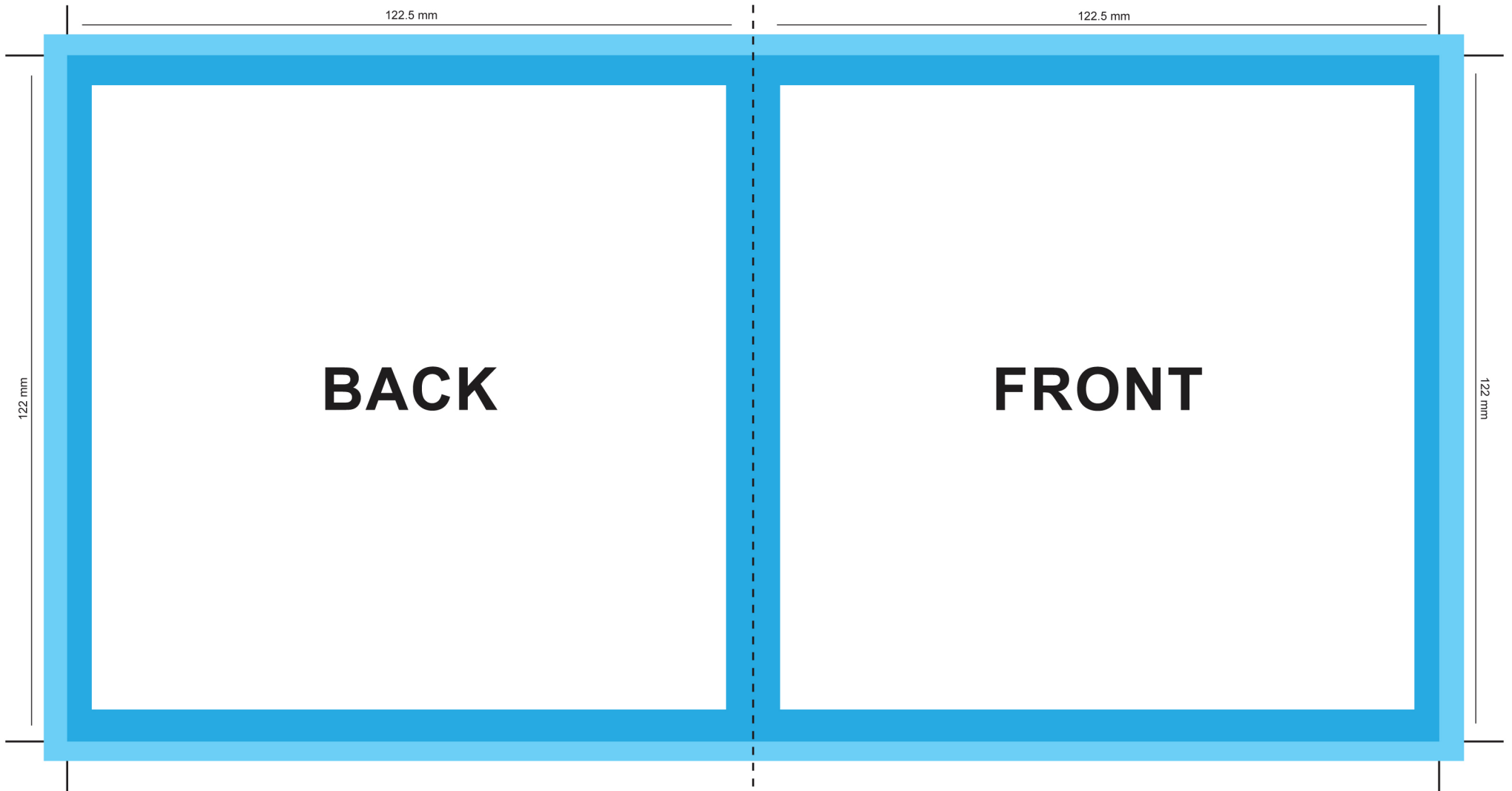


Do not change the size or positioning of this template.
For use with options 1 - 12 of our CDR duplication services.



Key Guide:

No text area



Bleed



Trim



Fold



1. No text or logos in any blue regions
2. Supply artwork with plenty of bleed, as indicated in the Key Guide
3. Artwork to be supplied at 300dpi
4. Turn off the guide layer before supplying your hi-res artwork
5. Preferred file formats: PDF / JPEG / TIFF